

brand	MCCULLOCH
-------	-----------

date	MAY/03	SHEET 1/4
------	--------	-----------

Model	Prefix
CABRIO 262	02

Product number
953900453

FIGURE 4

WALBRO WT 547

ZAMA C1Q M38

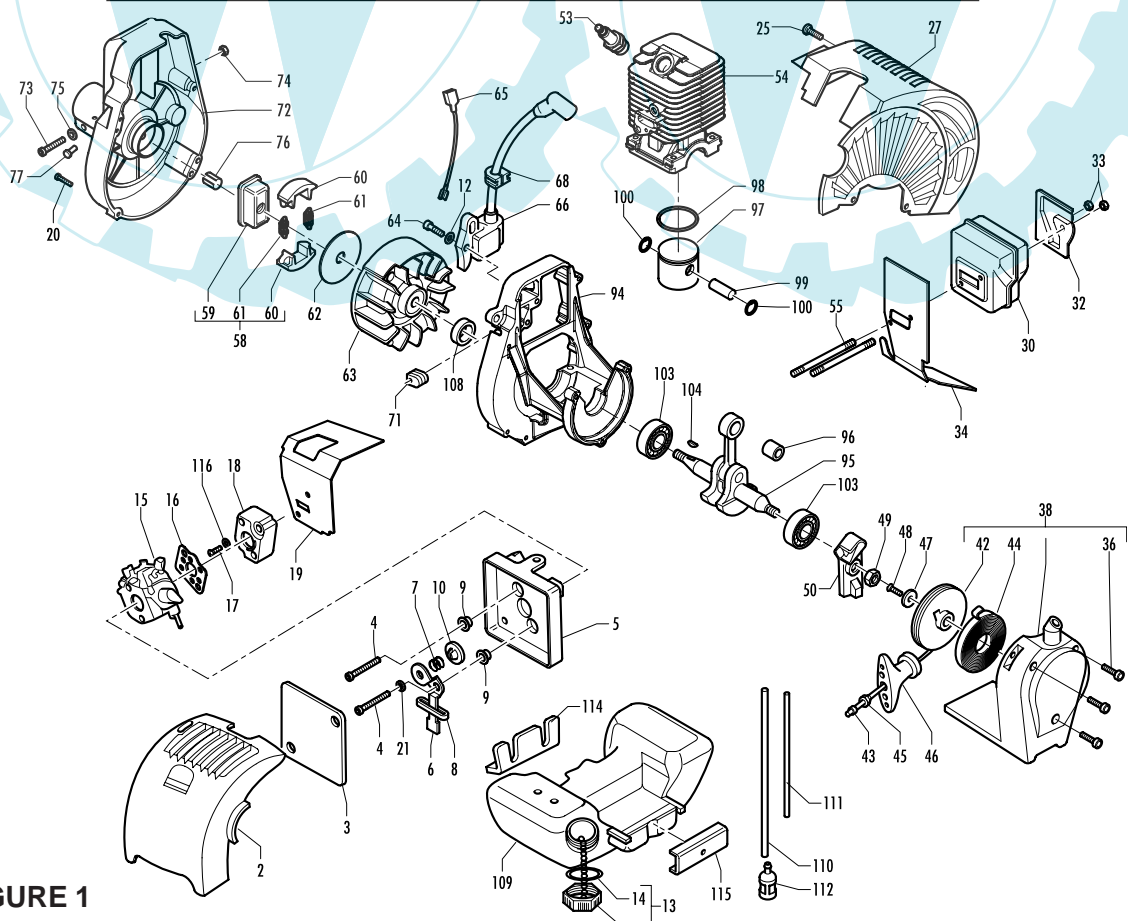
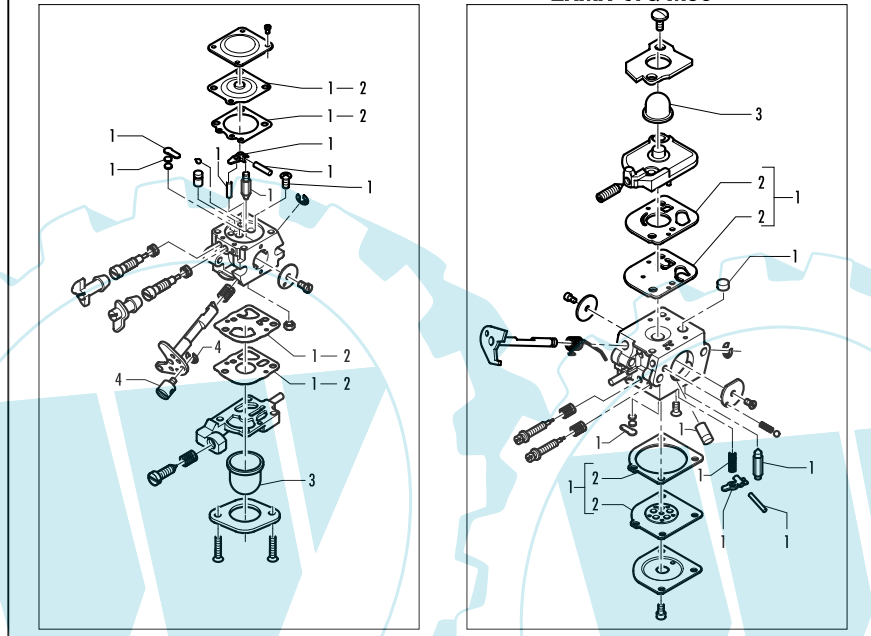


FIGURE 1

brand	MCCULLOCH
-------	------------------

date	MAY/03	SHEET 2/4
------	--------	-----------

Model	Prefix
CABRIO 262	02

Product number
953900453

FIGURE 1

pos	P/N McC	P/N ELX	Qty	DESCRIPTION
2	242703	538242703	1	filter cover
B 3	242035	538242035	1	air filter
4	235808	538235808	2	screw 5x50
5	248485	538248485	1	filter housing ass'y
6	• 241769	538241769	1	choke lever
7	• 235822	538235822	1	choke shutter spring
8	• 241622	538241622	1	plastic spacer
9	• 227022	538227022	2	spacer
10	• 241602	538241602	1	shutter choke
12	235248	538235248	2	washer
B 13	236563	538236563	1	fuel cap ass'y
A 14	• 236564	538236564	1	cap seal
C 15	FIGURE 4			
A 16	241600	538241600	1	spacer/gasket
17	235806	538235806	2	screw M5x20
C 18	241750	538241750	1	spacer
B 19	242034	538242034	1	cylinder gasket
20	227568	538227568	4	screw M4x20
21	235248	538235248	1	washer
25	241963	538241963	2	screw M4x22
27	242704	538242704	1	engine cover
C 30	242131	538242131	1	muffler
32	323760	538323760	1	muffler shield
33	235642	538235642	2	nut M5
B 34	242036	538242036	1	muffler gasket
36	241963	538241963	3	screw M4x20
C 38	242041	538242041	1	starter ass'y
B 42	• 241620	538241620	1	starter pulley
A 43	• 241746	538241746	1	starter rope
B 44	• 241619	538241619	1	starter spring
45	• 235612	538235612	1	washer
46	• 241778	538241778	1	starter handle
47	• 241703	538241703	1	washer
48	• 240862	538240862	1	screw M4x18
49	241624	538241624	1	M8 nut
50	241784	538241784	1	starter pawl ass'y
A 53	92879	538092879	1	RDJ8J spare plug
C 54	241800	538241800	1	cylinder
55	242037	538242037	2	muffler stud bolt
B 58	241793	538241793	1	clutch ass'y
59	• 241789	538241789	1	clutch hub
60	• 241743	538241743	2	clutch shoe
A 61	• 241794	538241794	2	spring
62	241604	538241604	1	clutch dust shield

pos	P/N McC	P/N ELX	Qty	DESCRIPTION
63	241796	538241796	1	flywheel
64	235806	538235806	2	screw M5x20
65	241606	538241606	1	ground wire
C 66	241749	538241749	1	ignition coil
68	236322	538236322	1	wire protection
71	241607	538241607	1	fair lead
C 72	241725	538241725	1	mount ass'y
73	• 235803	538235803	1	screw M5x25
74	• 229524	538229524	1	M5 nut
75	• 235248	538235248	1	washer
76	• 228260	538228260	1	pin
77	236981	538236981	1	screw 3,5x9,5
94	242029	538242029	1	engine side cover
95	242003	538242003	1	crank shaft ass'y
C 96	• 235742	538235742	1	needle bearing
C 97	248177	538248177	1	piston kit
B 98	• 240002	538240002	1	piston ring
99	• 241735	538241735	1	piston pin
100	• 235008	538235008	2	snap ring
C 103	242030	538242030	2	grommet/bearing ass'y
C 104	227631	538227631	1	key
106	235803	538235803	4	screw M5x25
C 109	242040	538242040	1	fuel tank ass'y
B 110	• 229717	538229717	1	hose
B 111	• 229743	538229743	1	primer bulb hose
A 112	93720	538093720	1	fuel pick up
114	242038	538242038	1	tank gasket
115	242039	538242039	1	gasket
116	235248	538235248	2	washer

FIG.4 WALBRO WT 547

C -	241601	538241601	carb.
B 1	• 324013	538324013	1 K20 rep.kit
A 2	•• 324009	538324009	1 D20 gasket kit
C 3	• 225834	538225834	1 primer bulb
4	• 224466	538224466	1 swivel kit

FIG.4 ZAMA C1Q M38

C -	241824	538241824	carb.
B 1	• 300465	538300465	1 RB-28 rep.kit
A 2	•• 300473	538300473	1 diaph/gasket kit
C 3	• 246946	538246946	1 primer bulb

A=ALTA ROTAZIONE
B=MEDIA ROTAZIONE
C=BASSA ROTAZIONE

A=HIGH MOVING
B=MEDIUM MOVING
C=SLOW MOVING

A=HAUTE DEMANDE
B=MOYENNE DEMANDE
C=BASSE DEMANDE

A=GROSSE NACHFRAGE
B=MITTELMAEßIGE
C=WENIGE NACHFRAGE

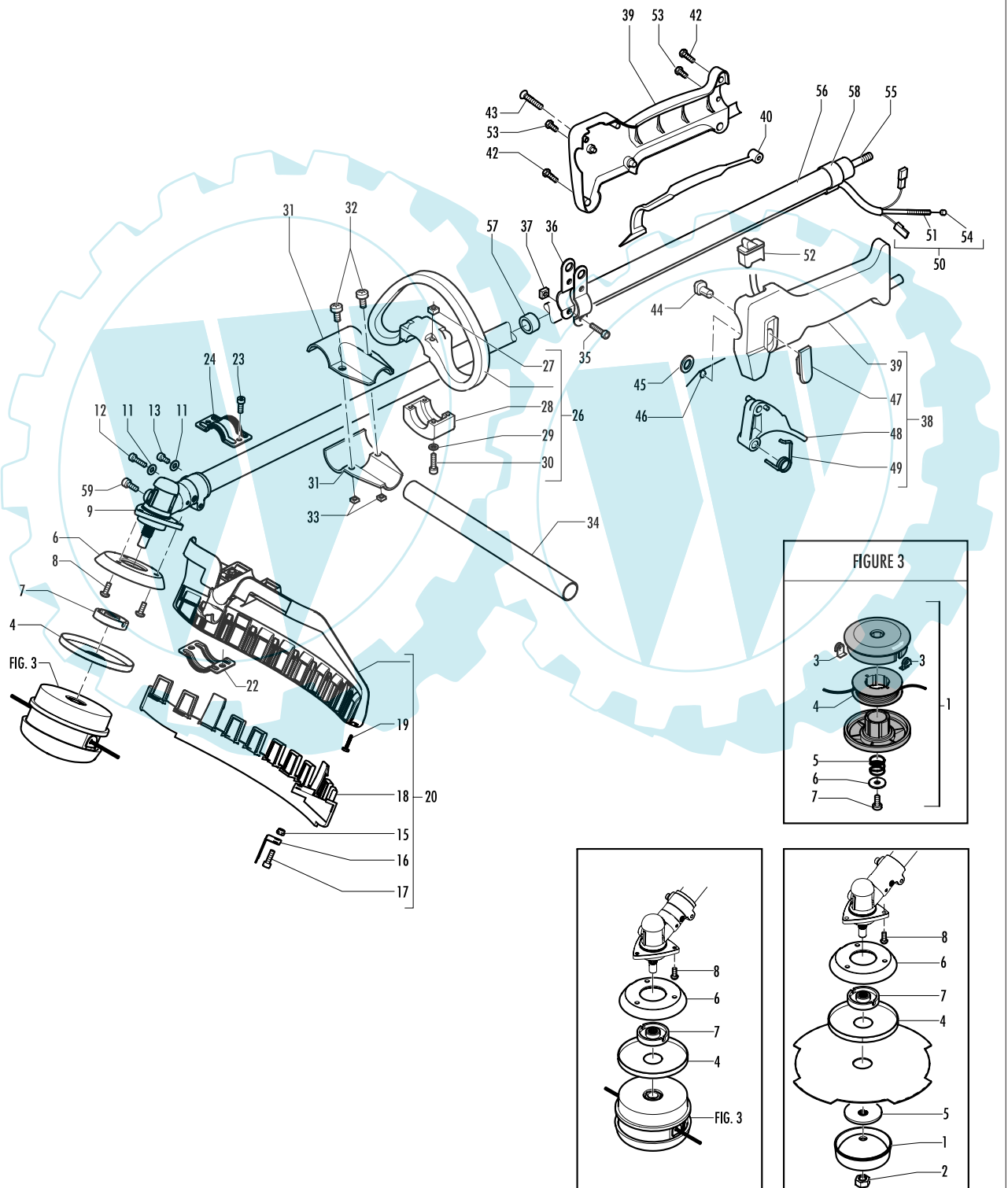
brand	MCCULLOCH
-------	------------------

date	MAY/03	SHEET 3/4
------	--------	-----------

Model	Prefix
CABRIO 262	02

Product number
953900453

FIGURE 2



brand	MCCULLOCH
-------	------------------

date	MAY/03	SHEET 4/4
------	--------	-----------

Model	Prefix
CABRIO 262	02

Product number
953900453

FIGURE 2

pos	P/N McC	P/N ELX	Qty	DESCRIPTION
1	236596	538236596	1	hub
2	240481	538240481	1	M10x1.25 nut
4	241155	538241155	1	string head shield
5	241006	538241006	1	plate
6	242729	538242729	1	flange adapter
7	242753	538242753	1	flange
8	240688	538240688	3	screw/washer M5x14
9	242728	538242728	1	gear box
10	FIGURE 3		1	string head
11	236529	538236529	3	split washer
12	235804	538235804	2	M5x30 screw
13	236381	538236381	1	M5x10 screw
15	229208	538229208	2	nut
16	241973	538241973	1	line cutter
17	227563	538227563	2	screw m5x16
B 18	242644	538242644	1	guard extension
19	240862	538240862	1	screw M4x18
20	248959	538248959	1	guard ass'y
22	242752	538242752	1	clamp lower
23	227563	538227563	2	screw M5x16
24	242629	538242629	1	upper clamp
26	227068	538227068	1	handle ass'y
27	• 236642	538236642	4	nut
28	• 227046	538227046	1	handle clamp
29	• 236936	538236936	4	washer
30	• 228320	538228320	4	screw M6x45
31	228146	538228146	2	Ø 25 handle att.1/2
32	235911	538235911	2	screw M6x12
33	236642	538236642	2	nut
34	246864	538246864	1	protection
35	235911	538235911	2	screw M6x12
36	228152	538228152	2	hook
37	236642	538236642	2	nut
38	227280	538227280	1	trigger box ass'y
39	• 246955	538246955	1	handle kit
40	•• 229819	538229819	1	safety trigger
42	• 240618	538240618	1	screw 3x16
43	• 240833	538240833	1	screw 3x20
44	• 229823	538229823	1	throttle clip
45	• 227065	538227065	1	berzing 5x4
46	• 229973	538229973	1	trigger spring
47	• 229824	538229824	1	throttle switch

pos	P/N McC	P/N ELX	Qty	DESCRIPTION
48	• 241296	538241296	1	trigger
49	• 240091	538240091	1	spring
C 50	• 227067	538227067	1	wires ass'y
C 51	•• 227073	538227073	1	wire
C 52	•• 236394	538236394	1	switch
53	236981	538236981	2	screw 3,5x0,5
54	235912	538235912	2	nut
55	240486	538240486	1	drive shaft
56	242442	538242442	1	outer shaft ass'y
57	• 241536	538241536	5	bushing ass'y
58	229850	538229850	2	harness ring
59	240151	538240151	1	screw M8x10

FIGURE 3

A	1	538249174	538249174	string head
B	3	• 241154	538241154	2 eyelet
B	4	• 248583B	538248583B	1 2 lines spool
5	• 240852	538240852	1	spring
6	• 5210	538005210	1	locking nut
7	• 229712	538229712	1	screw 5x16

A= ALTA ROTAZIONE
B=MEDIA ROTAZIONE
C=BASSA ROTAZIONE

A=HIGH MOVING
B=MEDIUM MOVING
C=SLOW MOVING

A=HAUTE DEMANDE
B=MOYENNE DEMANDE
C=BASSE DEMANDE

A=GROßE NACHFRAGE
B=MITTELMÄßIGE
C=WENIGE NACHFRAGE